

# Introducing PlanJCore

A fusion of computing capabilities through manageability

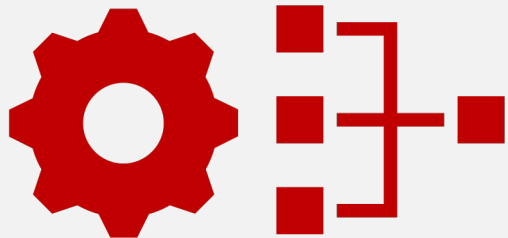
Designed for the connected and distributed world

Brought to you by Plan-J Solutions

<https://core.planj.ca>



# Inception



- **The ever changing Network**

- Deploying and maintaining numerous processing platforms
- Reusing almost any processing Hardware
- Monitoring and maintaining both the software and the system
- IoT and distributed processing

- **Self Contained**

- All the essentials in the PlanJCore Package
- Add specialized libraries, configure and run

- **Manageable**

- Built for Logging and Monitoring
- Auto Update capability with PlanJRepo
- Centralized management and configuration with PlanJBase



# Two key elements



- **The core.Item**

- Shaping itself to the processing requirements
- Normalizing the management and lifecycle of processing units



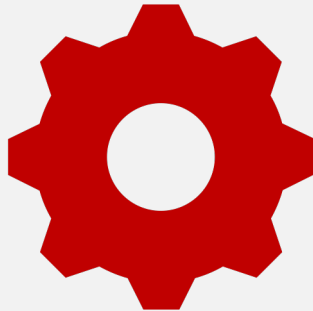
- **The data.Node**

- Carrying information with precision
- Shaping itself to the communications requirements

Interacting in a constant Flow, with the user and the system



core.  
Item



- **Configuration Driven**

- Enable and Disable core.Items with varied properties
- Can provide it's expectations interactively
- Leverages built-in or custom Items

- **Designed for real time monitoring**

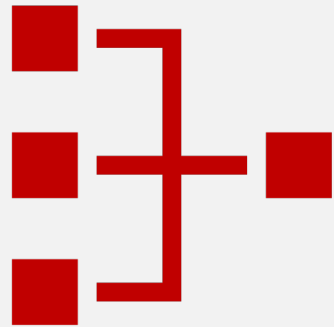
- Centralized Registry, grouped by Item Types
- Normalized, real-time reporting of Health and State

- **Easily reused / inherited**

- Object Oriented design, leverages full inheritance
- Powerful base features from the start
- Optimal Operability



data.  
Node



- **Based on Standards**

- data.Node uses nodeio for easy import and export
- Normalized data Types (Text, Numeric, Binary etc)
- Named childs or lists of Objects or simple Values
- Supports JSON - (XML and YAML in progress)

- **At the heart of the core.Item**

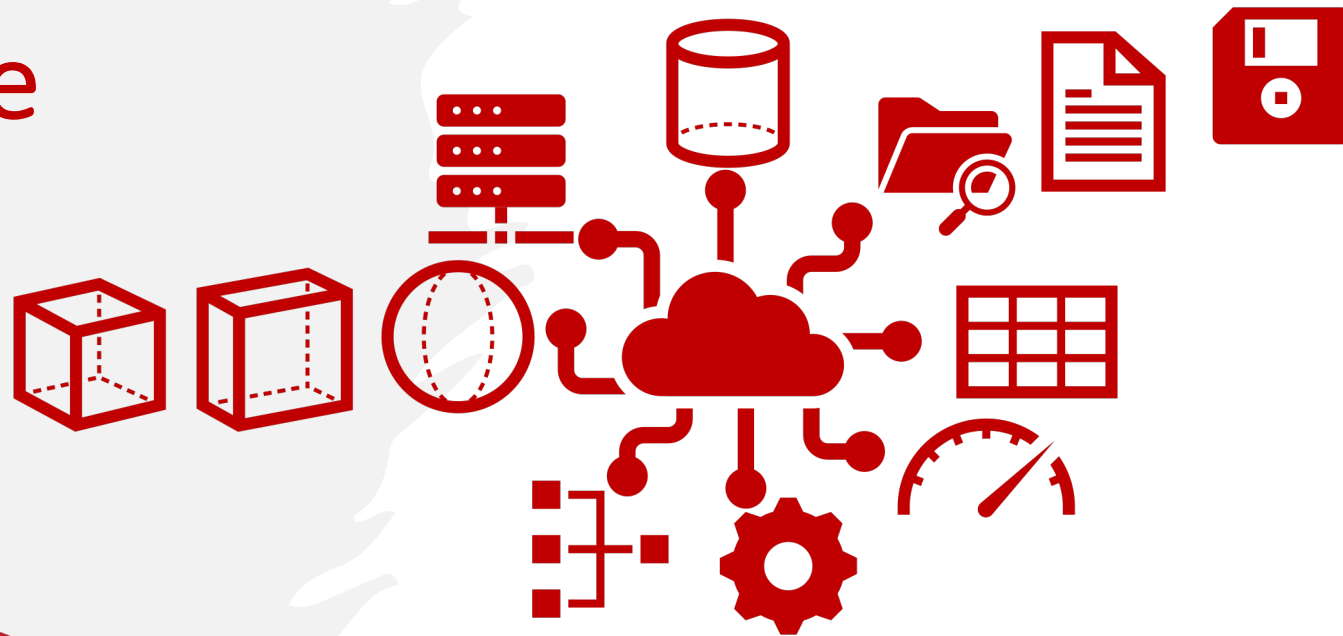
- Configure and communicate seamlessly
- Provides structured and portable output
- At the heart of the PlanJCore Infrastructure



# A Toolbox and more

- **PlanJCore Library**

- Toolbox of crypto and related numeric functions
- Text processing, specialized data tools
- Pre defined services (Web servers etc)
- Data Connectors and normalized interfaces



# First Contact PlanJBounce

- **A simple HTTP redirection / interception tool**
  - All Web traffic should be redirected from http to https
  - Most probes attempt to break in the unprotected port 80
  - Traps unwanted calls, redirects the valid ones
  - Demonstrates the basic monitoring capabilities of PlanJCore
  - Fully functional in 5 minutes : <https://core.planj.ca/PlanJBounce>

